

PSO PARTNER MEETING

Powered by ENOUGH

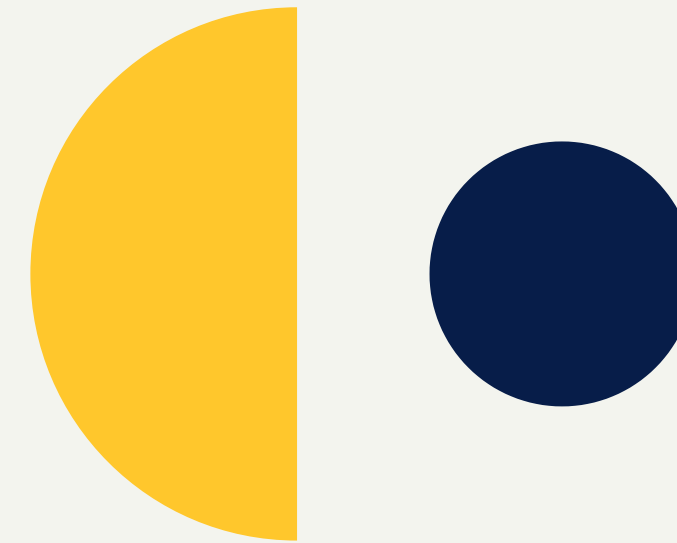
APRIL 14, 2026



USI Urban
Strategies
Inc.



AGENDA



- 01** Welcome & Check-in
 - 02** Happy Birthday, Subira!
 - 03** PSO sector-based community meetings- Follow Up
 - 04** Feedback PSO Governance Structure
 - 05** Early Learning to Economic Mobility Continuum
 - 06** Next Steps & Check out
-

Result: Partners are aligned on next steps regarding PSO Action Plan development, Governance, Roles, Services, Programs along the PSO Early Learning to Economic Mobility Continuum



CHECK-IN

1. **Type in the chat:** Your name, title, and organization
2. What is one unique skill or resource your organization brings to this partnership that you are most excited to share?

***Result:** Attendees will be present and ready to work together.*



ENOUGH WORK PLAN 2026

November 2025 to June

Community Assessment Phase

Data Collection/Identifying community needs - ENOUGH PILLARS & Partner Collaboration & Engagement
1) Businesses 2) Churches 3) Schools 4) Community Associations 5) Youth
Conduct Asset Mapping



March 2026

PSO Committee Governance Structure Development

Operationalize Structures for Governance and Accountability, Assign roles and responsibility

March 2026

Community PR

Develop Communication and PR plan to ensure that community knows who we all are, and our goal to work with and for the community. Also to find creative ways to elevate their voice

May to July

Review Findings and Prioritize

Based on Community Assessments, develop a findings report and prioritize Committee focus. Identify any gaps in data to build community profile

July to September

Data Analysis, Strategy Development, Community Validation

Get community feedback on strategies and action steps on addressing prioritized community needs based on community assessment

September to November

Evaluation and Strategic Check Point

Developing an action plan draft that we can present to the community at the Harvest Festival to get their feedback and celebrate another year of working together

November

Community Event

Host Annual Harvest Festival bringing PSO residents and partners together to have fun

USI is the PSO Backbone Organization



We work in neighborhoods in collaboration with cross-sector partners:

Partnership Alignment - align partners to common outcomes and target population goals.

Support aligned activities (service linkage for residents, partner MOUs and agreements, capacity-building).

Establish and track shared measurement (data platform, dashboards).

Build public will and advance policy & systems change with PSO Partners

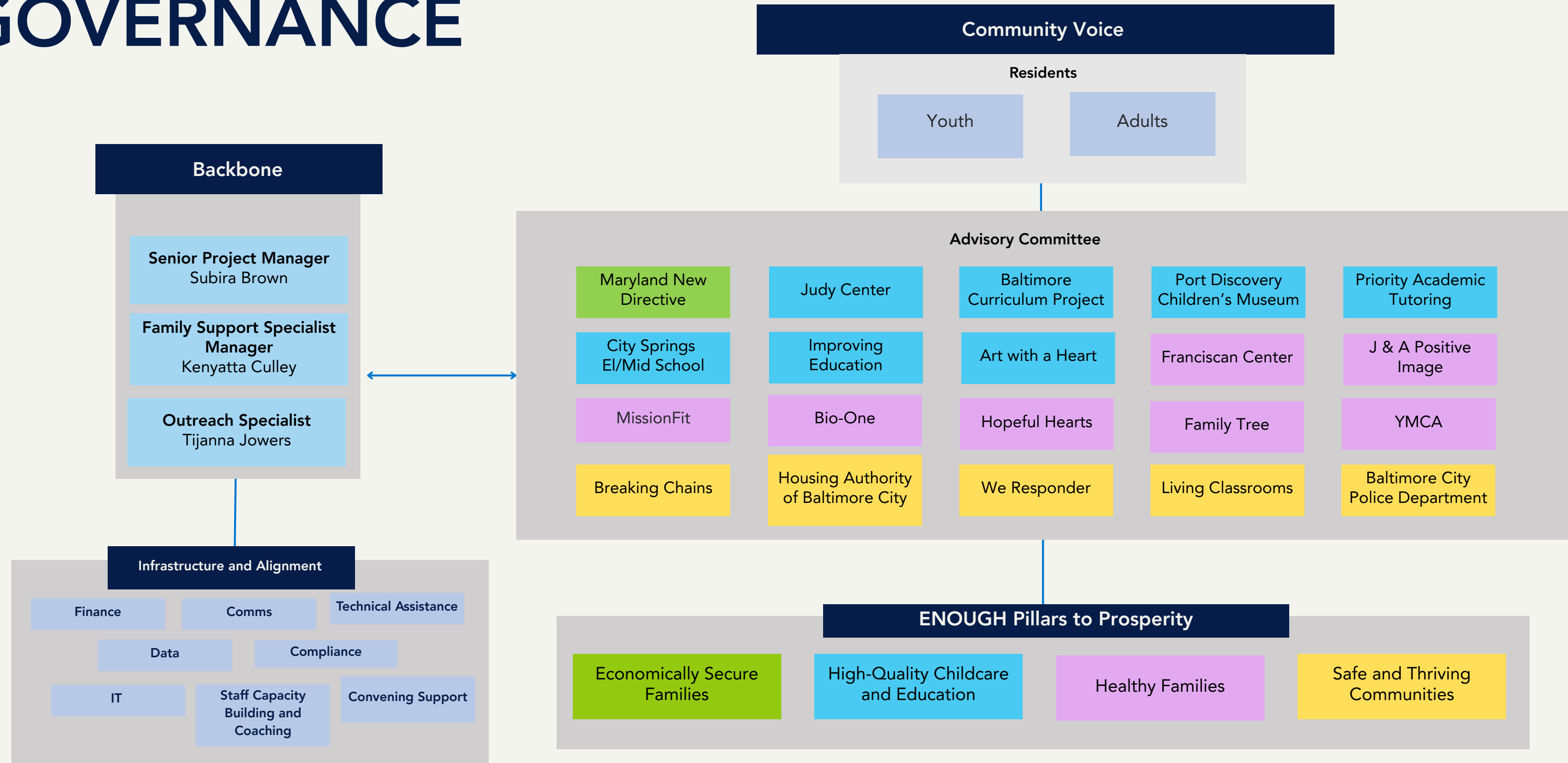
Mobilize resources (seek and apply for co-investment opportunities with partners, braid/blend public and philanthropic funds).



Collective Impact!



PSO ENOUGH GOVERNANCE



Partner Ecosystem



- Economically Secure Families
- High-Quality Childcare & Education
- Healthy Families
- Safe and Thriving Communities



CHECK OUT

- One action commitment you're taking ownership of between now and the next PSO partner meeting?
- Will you be attending the in-person workshop on Wednesday, May 6 at 9:00 am?

Result: Attendees share action commitments and are clear on the next steps.

