



# ENOUGH Partners Meeting

**Tuesday, April 14th, 2026**

**9:30 AM-11:00am**

**Location: Virtual**

Facilitated by: **Tyronda Minter, Shanell Bailey, & Tijanna Jowers**

## MEETING PURPOSE

Partners are aligned on next steps regarding PSO Action Plan development, Governance, Roles, Services, Programs along the PSO Early Learning to Economic Mobility Continuum.

## ATTENDANCE

Name	Organization	Email
Tyronda Minter	USI Vice President, Educational Initiatives	Tyronda.Minter@usi-inc.org
Shanell Bailey	Project Manager, Educational Initiatives (USI National Team)	Shanell.Bailey@usi-inc.org
Tijanna Jowers	Outreach Specialist (USI Baltimore)	Tijanna.Jowers@usi-inc.org
Kevin Gallaher	McCormack Baron Salazar (MBS)	Kevin.Gallaher@habc.org
Rob James	Living Classroom	Rob.James@mccormackbaron.com
Jermaine Jones	Baltimore City Council, District 12	jermaine.jones@baltimorecity.gov

Jacob Milton	Mayor's Office of Children and Family Success (MOCFS)	Jacob.Milton1@baltimorecity.gov
Bart Harvey	BD Development	bart.harvey@beatty.co
Mary Carole Zaworski	Maryland New Directions	mzaworski@mdnewdirections.org
Shelby Hiken	Port Discovery Children's Museum	shiken@portdiscovery.org
Rachel Demma	Port Discovery Children's Museum	rdemma@portdiscovery.org
Scyler Wolfe	No Struggle No Success (NSNS)	
Janet Abrahams	Housing Authority of Baltimore City (HABC)	janet.abrahams@habc.org
Sabriya Linton	Johns Hopkins Bloomberg School of Public Health	Haneefa.Saleem@jhu.edu; slinton1@jhu.edu
Tiffany Snead-Rose	Family League (Management Board)	tsneadrose@familyleague.org
Gayl M. Brooks	Child First Authority	gbrooks@childfirstauthority.org

## AGENDA OVERVIEW

1. Welcome & Check-In
2. Happy Birthday, Subira!
3. PSO sector-based community meeting-Follow Up
4. Feedback PSO Governance Structure
5. Early Learning to Economic Mobility Continuum
6. Next Step & Check out

## Welcome & Check-In

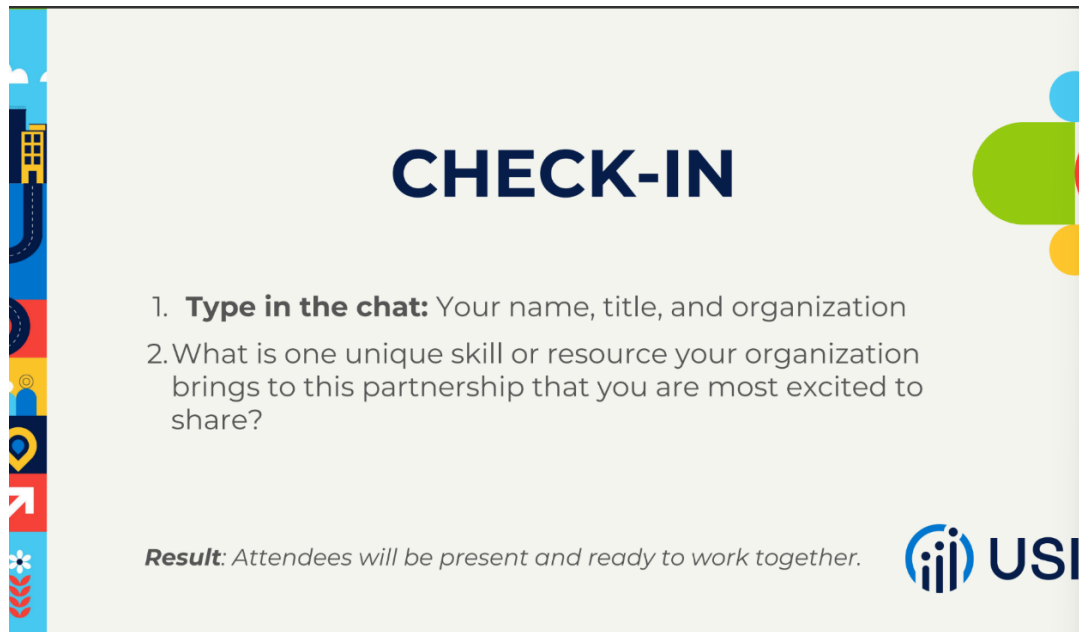


Figure 1: Check-In-Slide

Shanell Bailey opened the meeting, welcomed partners, and shared that **Subira Brown was on leave (birthday)**. Facilitators for the meeting were introduced.

Participants were asked to:

- Share **name, title, and organization**
- Answer: “What unique skill or resource does your organization bring to this partnership?”

### Key Themes from Partner Responses

- **Partnership & Collaboration:** Tiffany Snead-Rose (Family League of Baltimore)- “While we act as a funder, we also are a convener and collaborator... partnerships is our real wheelhouse.”

- **Community Engagement:** Scyler Wolfe (NSNS) highlighted trust-based relationship building.
- **Housing & Infrastructure:** MBS and BD Development noted housing and redevelopment efforts
- **Policy & Accountability:** Councilman Jermaine Jone- “One unique skill... is bringing people together... but also holding agencies accountable.”
- **Education & Workforce:** Mary Carole Zaworski (Maryland New Directions) and Shelby Hiken (Port Discovery) shared workforce training and early learning initiatives
- **Public Health & Evaluation:** Sabriya Linton (Johns Hopkins)- highlighted research and mental health evaluation of residents during redevelopment in the PSO footprint.

## Up-Coming Meetings for 2026

Shanell clarified how ENOUGH partner meeting’s function

**Virtual PSO Partner Meetings:** These are **bi-monthly meetings** held on the **second Tuesday** of the month from **9:30 am to 10:30 am ET**.

- Tuesday, June 9<sup>th</sup> at 9:30 am
- Tuesday, August 11<sup>th</sup> at 9:30 am
- Tuesday, October 13<sup>th</sup> at 9:30 am
- Tuesday, December 8<sup>th</sup> at 9:30 am

**In-Person Partner Workshops:** Mark your calendars for our upcoming face-to-face sessions.

- Wednesday, May 6<sup>th</sup> at 9:00 am
- Wednesday, September 16<sup>th</sup> at 9:00 am

February’s workshop focused on **needs assessment and partner input**.

## ENOUGH Work Plan 2026 Overview



Figure 2: ENOUGH Work Plan 2026

Tyronda Minter grounded the conversation by revisiting the purpose of ENOUGH:

“ENOUGH is Maryland’s first in the nation, community-driven initiative to reduce childhood poverty...”

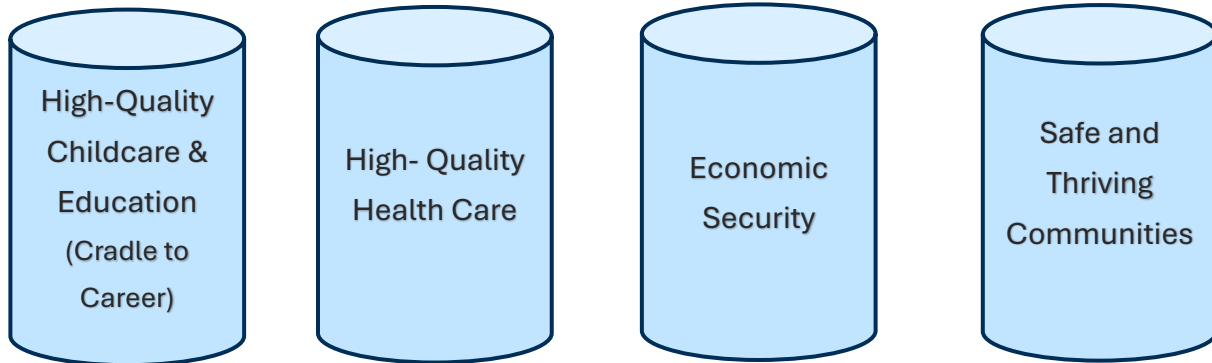
She engaged participants by asking them to guess the acronym, then clarified:

**E N O U G H**

**Engaging Neighborhood Organizations Unions Government Households**

*This initiative is cross-sector by design, requiring collaboration across all systems.*

## 4 Core Pillars



## Current Phase of Work: Action Planning

Tyronda emphasized that the initiative has moved into a more intensive phase:

“We have a lot of work ahead by the end of September 2026, we must have an action plan... We really want to ensure we listen to what the needs of the community are”

### Key Activities

- Asset mapping
- Needs assessments
- Community voice integration

The work is shifting from *relationship building* ➡ *implementation planning*

### Up-coming focus groups and listening sessions with:

- Residents (youth & adults)
- Businesses
- Faith community
- Schools
- Community associations

## Update on Feb 25th Partners Workshop Action Commitments:

Tijanna confirmed that follow-up emails were sent regarding the action commitments and partners have replied, and together we are getting dates on the calendar.

## USI as Backbone Organization



**USI is the PSO Backbone Organization** 

We work in **neighborhoods** in collaboration with **cross-sector partners**:

- Partnership Alignment** - align partners to common outcomes and target population goals.
- Support aligned activities** (service linkage for residents, partner MOUs and agreements, capacity-building).
- Establish and track shared measurement** (data platform, dashboards).
- Build public will and advance policy & systems change** with PSO Partners
- Mobilize resources** (seek and apply for co-investment opportunities with partners, braid/blend public and philanthropic funds).



**Collective Impact!**



Figure 3: USI is the PSO Backbone Organization Slide

***USI acts as the backbone organization, supporting coordination and alignment across all partners by:***

- Aligning partners around shared outcomes and target populations
- Connecting services and strengthening partnerships through MOUs and collaboration
- Mobilizing and coordinating resources, including co-investment opportunities
- Supporting data tracking and shared measurement of progress
- Advancing public will, policy, and systems-level change

## Governance Structure Discussion

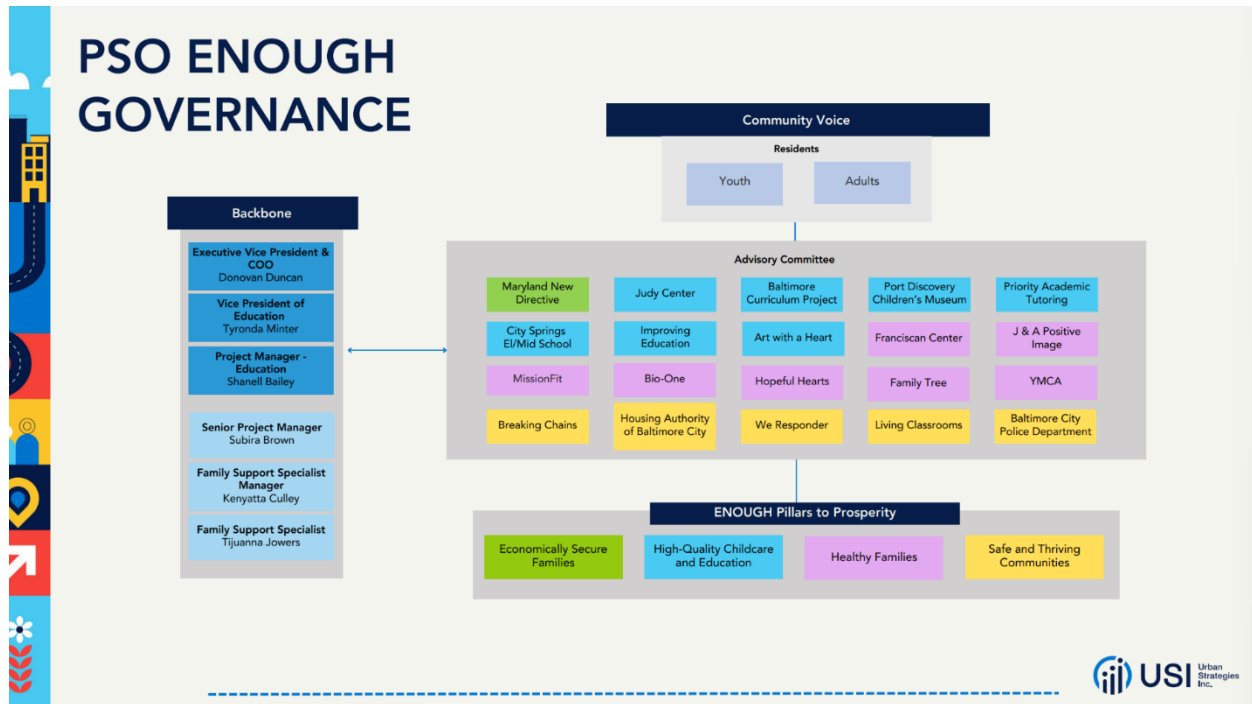


Figure 4: PSO ENOUGH Governance slide

Tyronda walked partners through the proposed governance structure, using the visual diagram to illustrate how partners, systems, and community voice are connected within the PSO ENOUGH initiative.

### Key Emphasis

- Community voice (youth and residents) is centered as a guiding force
- Partners are aligned across key focus areas (pillars) to support shared outcomes
- The structure reflects a collaborative, cross-sector approach rather than a top-down model

Tyronda also clarified that the diagram includes **partners with formalized MOUs** and is used to document active participation within the initiative. Partners were encouraged to review their inclusion and notify USI if they are interested in formalizing or confirming their partnership through an MOU, as this supports accurate documentation and alignment for grant reporting purposes.

### Partner Feedback & Engagement

Several partners actively engaged with the visual and shared positive feedback, including:

- **Mary Carole Zaworski (MND):** “Love this diagram!”
- **Jermain Jones and Kevin Gallher** responded positively to the clarity and organization of the structure

### Partner Ecosystem Mapping



Figure 5: Partner Ecosystem slide

Tyronda introduced the Partner Ecosystem visual to illustrate how organizations are positioned within the PSO ENOUGH initiative based on their areas of impact and service.



### **Partner Categories Included**

- Economically Secure Families
- High-Quality Childcare & Education
- Healthy Families
- Safe & Thriving Communities

The purpose of this visual was to help partners better understand how their work fits within the broader system and how efforts across sectors are interconnected in supporting families within the PSO footprint.

Tyronda **encouraged partners to review their placement within the ecosystem and identify where their services align, noting that many organizations may contribute to multiple focus areas.**

## Early Learning → Economic Mobility Continuum

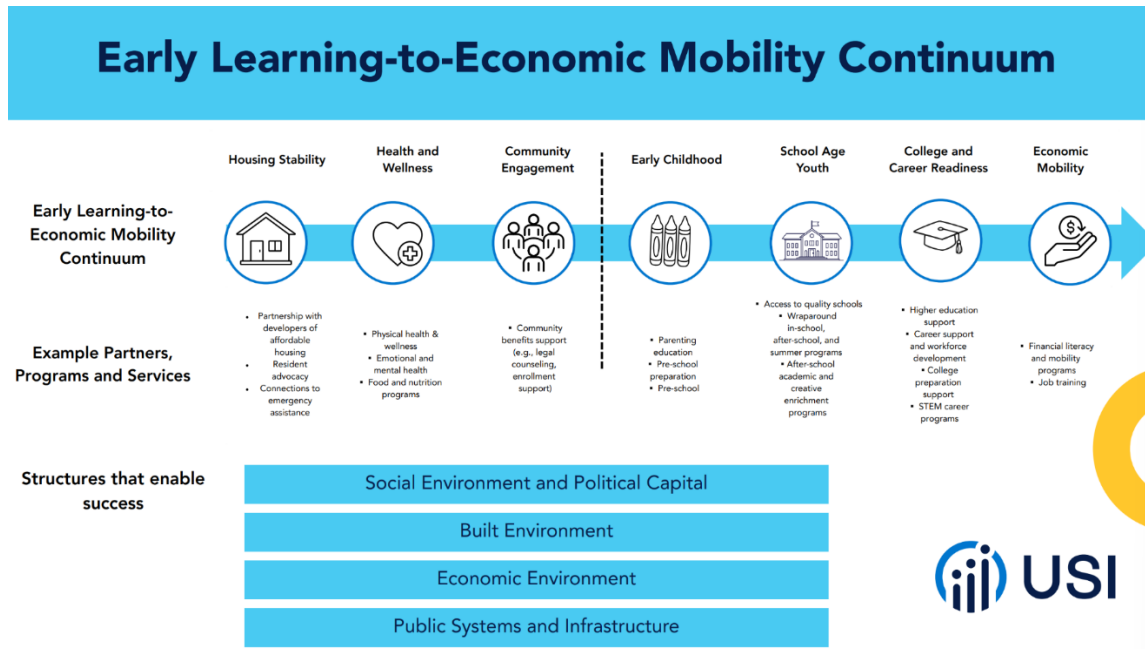


Figure 6: Early Learning-to-Economic Mobility Continuum Slide

Tyronda Minter introduced the Early Learning to Economic Mobility Continuum as a framework that connects early childhood development to long-term stability and success. She emphasized the importance of addressing foundational needs early on, stating:

“Before they are ready for school and life, they need to be healthy and well.”

### Key Focus Areas

- Behavioral health
- Food access and nutrition
- Housing stability
- Early learning and school readiness



The continuum highlights how these areas work together to support families from early childhood through adulthood, reinforcing a cradle-to-career approach.

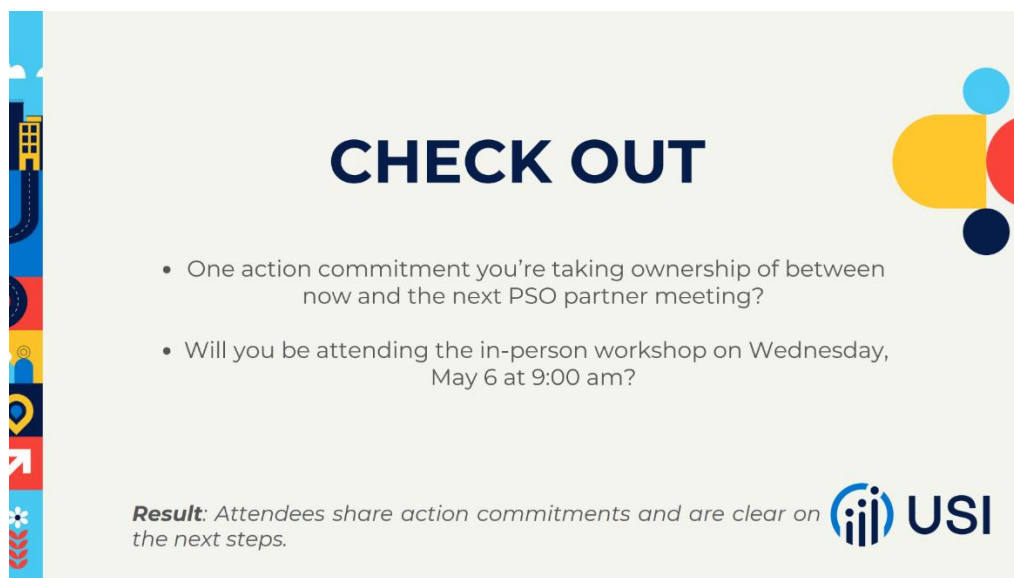
### **Partner Engagement & Next Steps**

USI asked partners to actively contribute to building out this continuum by:

- Identifying services and resources their organizations provide
- Sharing specific programs that align with these focus areas

This information will be used to create a more comprehensive and accurate representation of available support within the PSO footprint.

## Check Out



**CHECK OUT**

- One action commitment you're taking ownership of between now and the next PSO partner meeting?
- Will you be attending the in-person workshop on Wednesday, May 6 at 9:00 am?

*Result: Attendees share action commitments and are clear on the next steps.*




Figure 7: Check Out slide

Partners were asked:

1. What action will they take before next meeting
2. If they will attend May 6 workshop

### Confirmed Attendance

- HABC
- Family League
- City Council
- MBS
- MND
- NSNS