

To foster a thriving neighborhood culture that supports children and families and is undergirded by a cradle-to-career pipeline of educational and family resources.

ST. LOUIS, MISSOURI

# 63106 PROMISE TO SUCCESS

A Promise Neighborhoods Initiative

USI was awarded the first ever Promise Neighborhoods Grant for Missouri in 2023

## POPULATION IMPACT (0- 24 years)

STATE OF MISSOURI  
898,279 youth  
(Source: MODOE.com)

ST. LOUIS PUBLIC SCHOOLS  
19,299 youth  
(Source: niche.com)

ADDITIONAL SCHOOLS IN 63106  
3,500+ youth  
(Source: SLPS data)

### 63106 PROMISE TO SUCCESS SCHOOLS SERVED

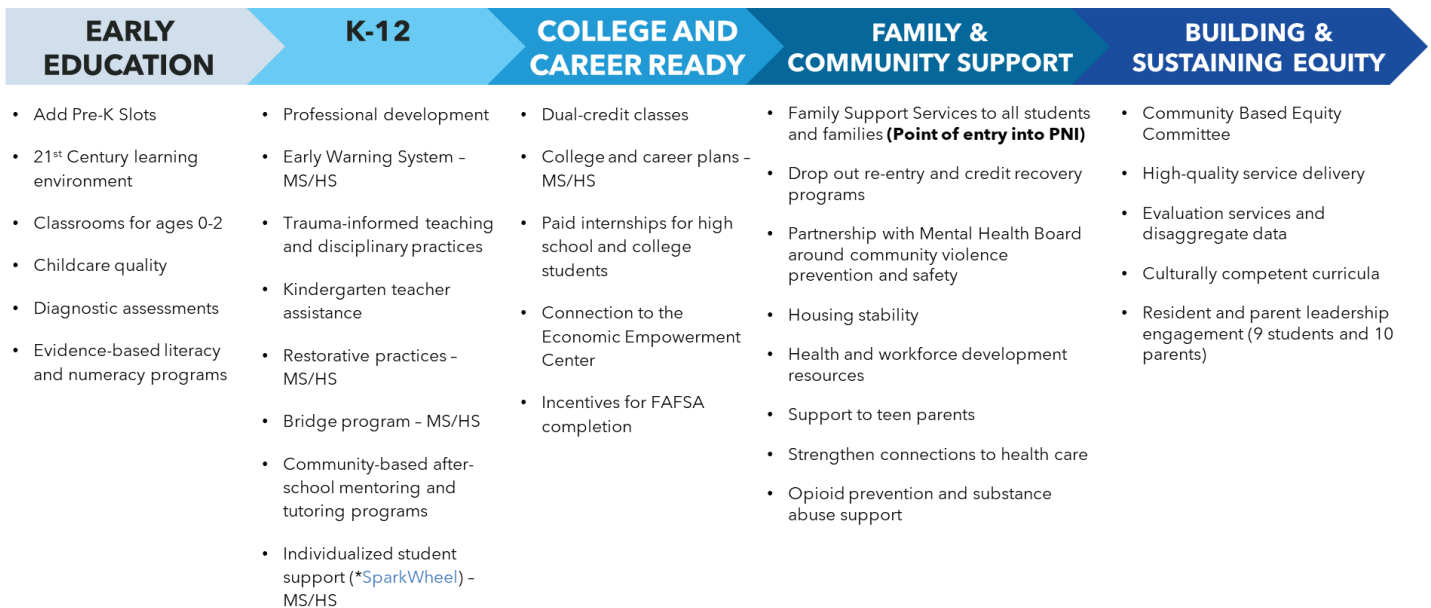
Target Population  
3,499+ total youth  
(Source: US Census Data 2022)

USI Region (PNI Neighborhood)  
Target Population  
2,974+ Youth

## STUDENTS SERVED

- Serving students and families in 63106
- Eligible for students in 63106 as of March 30, 2023
- Supporting schools, leaders, and staff in service of 63106

## PIPELINE OF SOLUTIONS



MS: middle school

HS: high school

\*CIS: Formerly Communities in Schools; Now SparkWheel

FAFSA: Free Application for Federal Student Aid

# GOVERNMENT PERFORMANCE AND RESULTS ACT (GPRA) INDICATORS FOR PROMISE NEIGHBORHOODS

- 1** Number and percent of children in kindergarten who demonstrate at the beginning of the program or school year age-appropriate functioning across multiple domains of early learning as determined using developmentally-appropriate early learning measures.
- 2** Students are proficient in core academic subjects: 2.1 Number and percentage of students at or above grade level according to State mathematics assessments in at least the grades required by the ESEA (3rd through 8th grades and once in high school). 2.2 Number and percentage of students at or above grade level according to State English language arts assessments in at least the grades required by the ESEA.
- 3** Students successfully transition from middle school grades to high school: 3.1 Attendance rate of students in 6th, 7th, 8th, and 9th grade as defined by average daily attendance. 3.2 Chronic absenteeism rate of students in 6th, 7th, 8th, and 9th grades.
- 4** Youth graduate from high school: Four-year adjusted cohort graduation rate.
- 5** High school graduates obtain a postsecondary degree, certification or credential: 5.1 Number and percentage of Promise Neighborhood students who enroll in a two-year or four-year college or university after graduation. 5.2 Number and percent of Promise Neighborhood students who graduate from a two-year or four-year college or university or vocational certification completion.
- 6** Students are healthy: Number and percentage of children who consume five or more servings of fruits and vegetables daily.
- 7** Number and percent of students who feel safe at school and traveling to and from school, as measured by a school climate needs assessment.
- 8** Students live in stable communities: Student mobility rate (as defined in the notice).
- 9** Families and community members support learning in promise Neighborhood Schools: 9.1 Number and percentage of parents or family members that read to or encourage their children to read three or more times a week or reported their child read to themselves three or more times a week (birth-8th grade). 9.2 Number and percentage of parents/family members who report talking about the importance of college and career (9th-12th grade).
- 10** Number and percent of students who have school and home access (and percent of the day they have access) to broadband internet and a connected computing device.

*Minimum requirement for indicators*

## OUR EDUCATION PARTNERS

Total Leverage Amount:  
**\$56,895,326**



USI | URBAN STRATEGIES, INC.

USI is a national nonprofit leader with extensive experience in the design and implementation of place-based human capital, neighborhood and economic development strategies in communities that are undergoing comprehensive physical revitalization. To learn more, visit [www.urbanstrategiesinc.org](http://www.urbanstrategiesinc.org)

