



# Cedars at Carver Park Galveston, Texas

USI | URBAN STRATEGIES, INC.  
Families at the Center of Results

📍 2915 Ball St. Galveston, TX. 77550

☎ (409) 974-4390

## The Galveston Revitalization Program

The Galveston Revitalization program located at the Cedars at Carver Park and the Villas on the Strand has created a vibrant and re-energized mixed-income housing community with services, programs and amenities that empower the families that live there and provide opportunities for current residents to improve the quality of life for their families.

*79% of residents are employed*



### Propelling Educational Success:

To help reduce the widening of the digital divide and opportunity gap, USI will ensure youth and their families are provided with resources to move them towards a path of thriving. Educationally, this means that youth have access to an operable computer, reliable internet access and digital literacy skills. In addition, it means ensuring that youth and their families have access to the most current school information and connections to education providers to supplement learning. Currently, 16 out of 20 (80%) of children are connected to high quality early learning and 106 out of 117 (91%) of in school youth participate in youth enrichment activities.

*70% of residents have health insurance*



### Improving Health & Wellness:

USI will support the health and wellness needs our families by ensuring they have access to resources that help manage chronic health conditions, reduce stress, and enhance mental stability. In addition, USI will provide families with preventative health information and programming that promote and encourage families to live a healthier lifestyle. Currently, 96 out of 139 (70%) of residents have health insurance and 57 (100%) of residents are connected with the appropriate health care to manage their chronic health concerns.

*91% of in school youth participate in youth enrichment activities*



*130 households are actively engaged in family support*



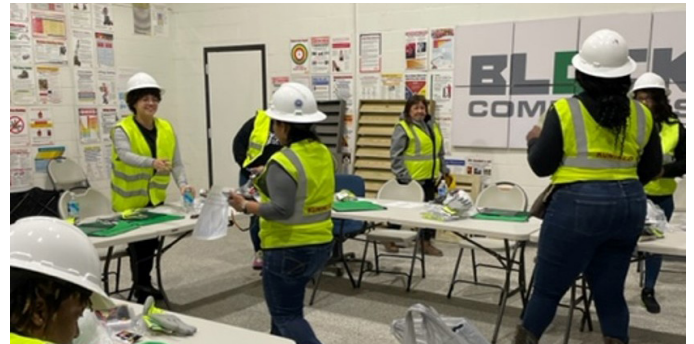
### Moving Families to Economic Self-Sufficiency:

USI is committed to supporting families who are ready to return to work and hold intentional conversations with those who have indicated they are not ready to return. USI continues to engage our employer and adult education partners to ensure our families have access to employment that leads to careers and programs that increase educational obtainments. In 2022, the number of employed able-bodied residents has increased by 4% ending with 76 out of 96. Currently, 76 out of 96 (79%) of residents are employed, up from 69 (75%) in 2021 and \$13.78 is the average hourly wage, up from \$11.15 in 2021.



### Relocation and Family Support:

Despite experiencing a global pandemic caused by COVID 19, USI continues to focus on our Pillars of Service. Although COVID 19 created some unforeseen challenges and shifted some priorities, USI staff stays committed to ensuring the needs of families were met. Our approach to identifying needs in real time creates an opportunity for USI to individually tailor interventions to improve outcomes for families with the goal of moving them from stable to thriving. In addition, USI will engage key stakeholders to align contributions and participate in strategic planning for sustainability. 130 out of 145 (90%) of households are actively engaged with USI.



### All Families are Stable and Thriving



## USI Human Capital Communities

In order to create successful and thriving neighborhoods that include equitable pathways to social and economic mobility for families, USI plans and coordinates a thoughtful network of supports that operate concurrently with community revitalization efforts during the Planning, Redevelopment, and Sustainable life cycles of each community. To ensure the coordination of

these supports, USI provides a seamless family supportive services system to offer residents a single point of entry to a full continuum of resources, services, and programs. In support of Human Capital Communities, USI coordinates with property management staff for the delivery of on-site programs and services.